



UTSA & UT HEALTH SAN ANTONIO INTEGRATION

Building The Foundation of a World-Class University:

**One Vision | One Mission
Serving our Community Through Excellence in
Higher Education, Discovery and Health Care Delivery**

August 22 & 23, 2024 -Town Hall Deck

The UT System Board of Regents Vision for Creating a Premier Global University:

Board Motions Passed Unanimously on August 22, 2024:

- Authorized Chancellor James B. Milliken and the UT System to work with UT San Antonio President Taylor Eighmy and UT Health San Antonio (UTHSA) Acting President Rob Hromas to integrate both institutions into one unified institution by 2025.
- Intent to name Eighmy as president of the new aligned university, upon the time of its approval by accrediting entities.



UT System Board of Regents announces plans to integrate UTSA and UT Health San Antonio into a premiere global university to best serve Texas and nation

AUSTIN, TX | AUGUST 22, 2024

Today, University of Texas System Board of Regents Chairman Kevin P. Eltife and the board authorized Chancellor James B. Milliken and the UT System to work with UT San Antonio President Taylor Eighmy and UT Health San Antonio (UTHSA) Acting President Rob Hromas to integrate both institutions into one unified institution by 2025. In a related motion, the regents also unanimously voted their intent to name Eighmy as president of the new aligned university, upon the time of its approval by accrediting entities.

"Great cities and great universities make each other better. It is time to marshal the talent, size and scale of UTSA and UTHSA to multiply their roles as global leaders in education, healthcare, and innovation," Eltife said. "By bringing together all of their complementary and unique strengths, we will give Texans access to the best education, discoveries and health care imaginable, while accelerating the university's trajectory as a top U.S. and global university."

Key to Eltife's and the regents' plan was the decision to fully leverage the individual contributions of UT Health San Antonio and UTSA - both of which have been instrumental in propelling San Antonio as a leader in healthcare, biosciences, national security, and data science - to create a powerful, singular entity that surpasses the sum of its parts. UT Health San Antonio, the largest academic health research institution in South Texas, ranks in the top 3% globally for NIH funding. UTSA, a top tier (Carnegie R1) research institution, educates 35,000 students across seven colleges and interdisciplinary schools. This merger will enhance the potential of both institutions, transforming San Antonio and South Texas into a global hub of academic and research excellence.

According to the United States Census Bureau's most recent data, San Antonio, the nation's seventh-largest city and second largest in Texas, added nearly 22,000 new residents between July 2022 and July 2023 - more than any other city in America. As a critical gateway to South Texas, which is home to 5.5 million people and projected to grow to 6.1 million by 2040, San Antonio's global influence continues to expand, and the UT System is committed to a world-class university that embodies the region's rich history, vibrant culture and opportunity.

James C. "Rad" Weaver of San Antonio, Vice Chairman of the Board of Regents, hailed the action as one of the most important transformational steps the two UT institutions will take together for the long-term benefit of the city and state.

"I've witnessed the successes of UTSA and UTHSA over many years, and this merger is the catalyst that will supercharge our region as a national leader in learning, innovation, health, and economic vigor," Weaver said. "I'm very pleased that Taylor Eighmy, who has led UTSA so admirably for the past seven years, will ultimately lead the university."

Recent UT System Board of Regents Actions Around Realizing Transformational Opportunities

2021



2023



2024



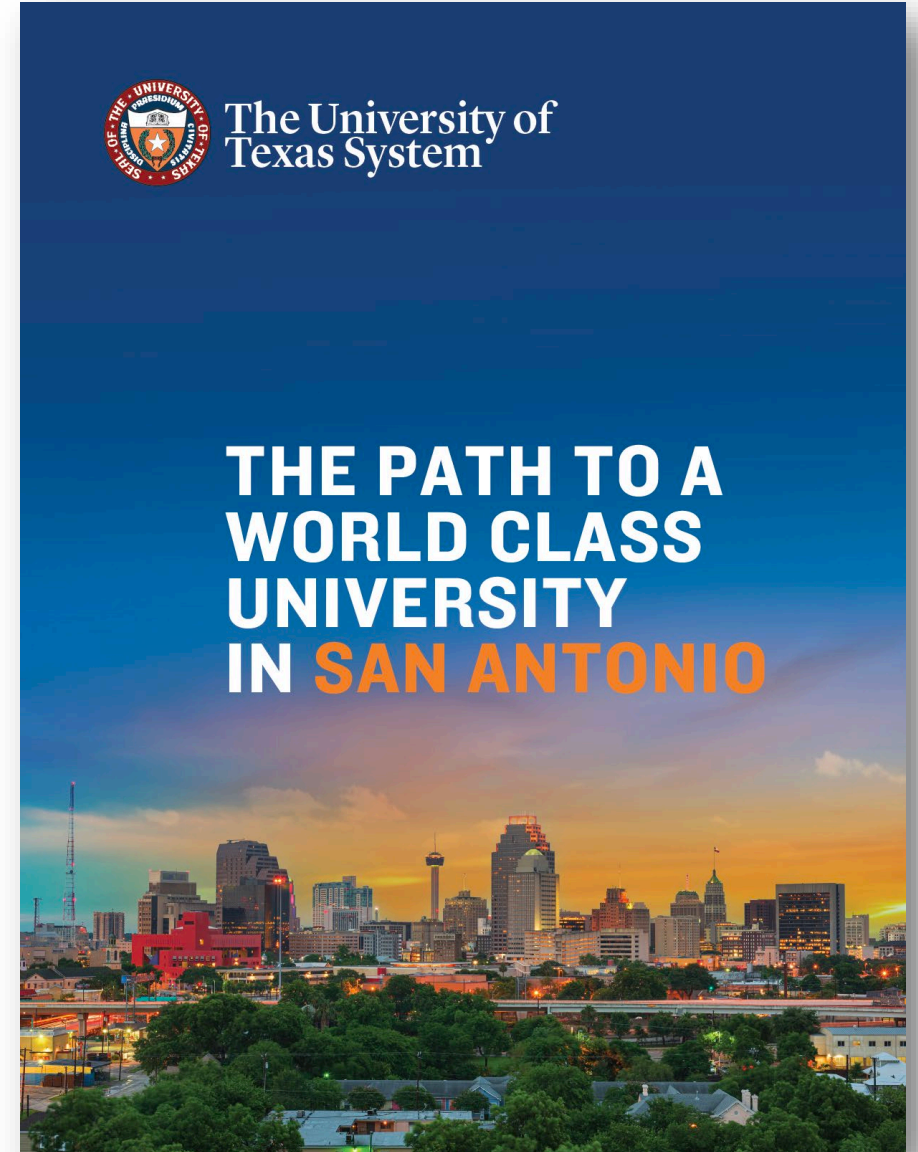
2024



The UT System Case Statement:

The University of Texas System Board of Regents has authorized the Chancellor and UT System to work with The University of Texas at San Antonio (UTSA) and UT Health Science Center San Antonio (UTHSA) to integrate both institutions as one premier university to maximize service to San Antonio, Texas, and the world through education, innovation, discovery, and healthcare.

- San Antonio's Influence on Texas and the Nation
- Great Cities Need Great Universities
- Unifying Talent, Energy, and Resources to Best Serve Texas, the U.S., and the World
- Scaling Impact for South Texas



AN HISTORIC MOMENT, NOW IS THE TIME



Build A World Class University



Drive Discovery, Translation, and Disruptive Innovation

Amplify Trajectories & Legacy of Collaboration



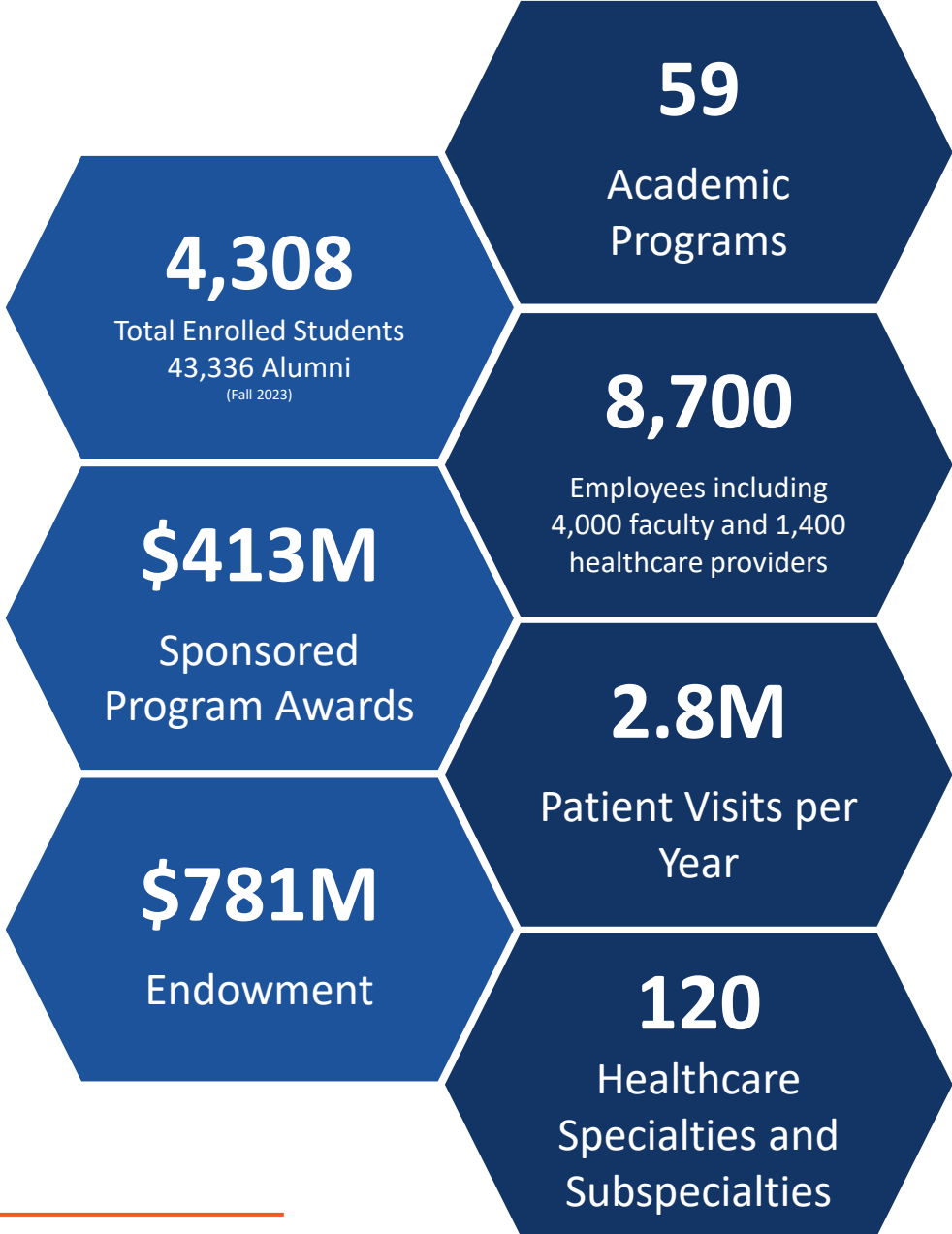
Focus on Access, Health Care, Excellence and Impact to Texas and the World



UT HEALTH SAN ANTONIO

KEY DISTINCTIONS

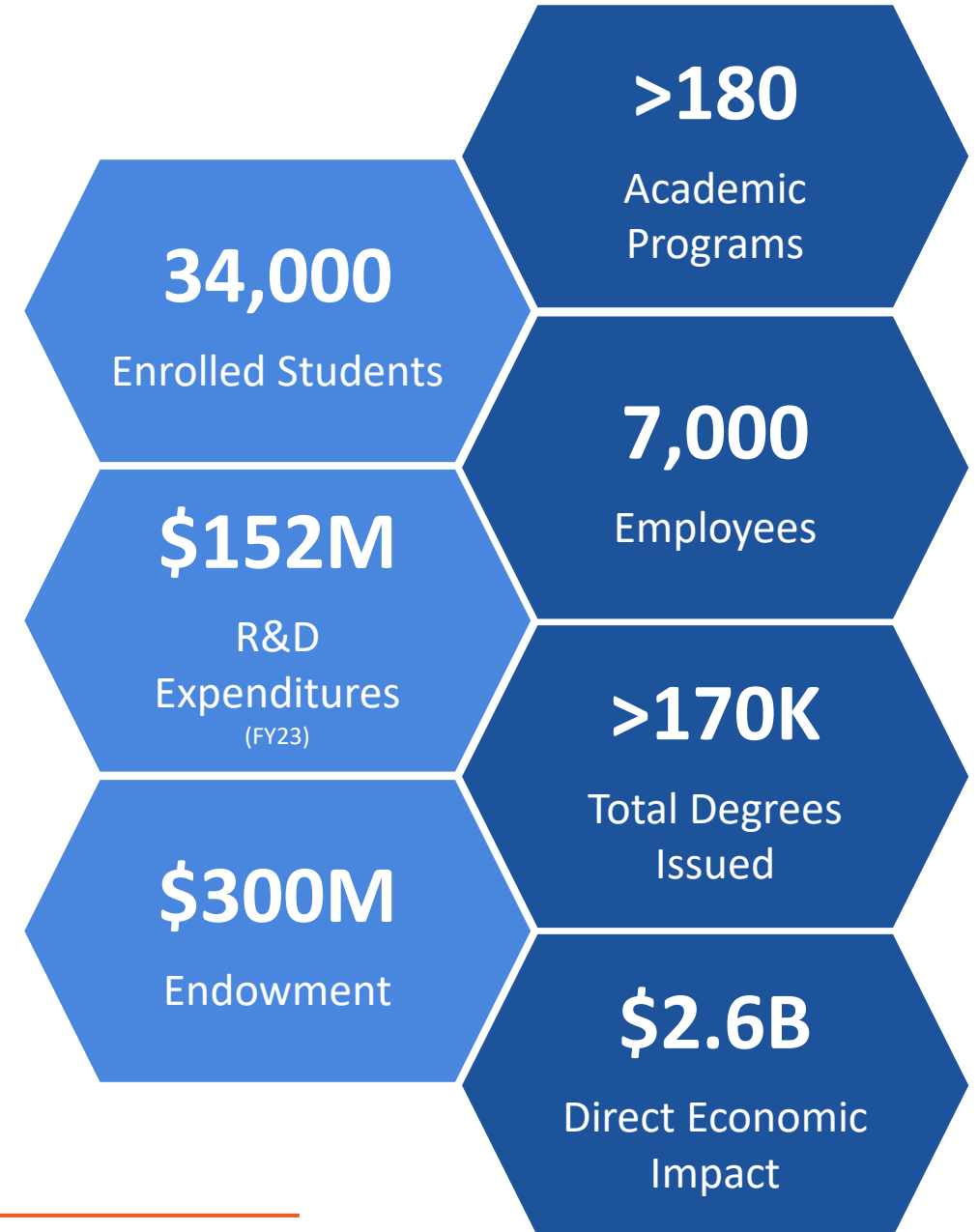
- A nationally ranked academic health sciences institution with six schools, a health care system, and a health-related research enterprise including 5 National Institute of Health (NIH)-funded centers.
- Ranked top 3% worldwide in National of Institutes funding. Top 12% as *U.S. News & World Report 2024* best global universities. Top 2% in clinical medicine specialties (out of 2,250 universities ranked)
- The university's first hospital, the **\$471 million UT Health San Antonio Multispecialty and Research Hospital**, is set to open in December 2024.
- Is one of only five institutions with National Institutes of Health (NIH)-funded DDS/PhD and MD/PhD programs.
- Offers **60 patient care sites** serving a 32-county service area.
- There are currently **520 active clinical trials** studying diseases including aging, cancer, Alzheimer's and brain diseases, mental/behavioral health, oral health and dental disciplines, diabetes, and many others.
- UT Health Physicians, the clinical practice of the Long School of Medicine, comprises the **largest medical practice in Central and South Texas.**



UT SAN ANTONIO

KEY DISTINCTIONS

- Eight colleges, five schools, with a new **College of AI, Computing, Cyber and Data Science** on the way.
- R1 research designation by Carnegie – one of the **top 4% of research universities** and **77th public R1 research university** nationally.
- Promise of social mobility and opportunity for San Antonio's predominantly Hispanic population – with **58% of students identifying as Hispanic/ Latino**.
- Top 50 university (out of 1,410) for driving **economic mobility** (Third Way).
- Ongoing \$12.5M **NIH BRAIN Initiative** award on genetic brain disorders.
- Home to **CyManII**, one of 16 National Manufacturing Innovation Institutes, a \$120M U.S. Department of Energy collaboration on cybersecure manufacturing.
- Home to a new **NSF National Hub for Neuromorphic Computing**, a \$5M enterprise.
- Three **National Center of Academic Excellence** designations from the National Security Agency and the Department of Homeland Security.
- **Seal of Excelencia**, **Carnegie Community Engaged**, & **APLU Innovation and Economic Prosperity** designations.
- The expansion of **UTSA Downtown Campuses**.



EXISTING PARTNERSHIPS

Though operating as two separate institutions to this point, there are already several areas where UTHSA and UTSA collaborate:

Academic Offerings	Student Services	Centers & Research
<ul style="list-style-type: none">▪ A joint school of public health offering MPH and DPH degrees▪ A robust biomedical engineering PhD program▪ A joint Doctor of Medicine and Master of Science in Artificial Intelligence, the first in the U.S.▪ 3+2 undergraduate-graduate programs in respiratory care, medical laboratory science, and physical therapy▪ 2+2 Bachelor of Science in Nursing▪ Ph.D. program in Translational Science	<ul style="list-style-type: none">▪ Student health services and student counseling▪ Sports Medicine care, education and research collaboration	<ul style="list-style-type: none">▪ Many collaborative R&D partnerships, particularly with the TBRI and the SwRI in the Research Alliance for Bioscience▪ UT Health Outpatient and Surgery Center at UTSA's Park West (off Kyle Seale Pkwy)

INTEGRATED INSTITUTION SNAPSHOT

Students	32,500 Undergraduate Enrollment	7,500 Graduate Enrollment	>200,000 Alumni	
Staff	1,400 Health Care Providers	4,000 Faculty	>15,900 Total Staff (including Faculty)	
Academic Programs	92 B.S. Programs	91 M.S. Programs	32 Doctoral Programs	
Financial Impact	\$6.5B Direct Economic Impact	\$2.2B Annual Budget	\$1.1B Endowment	\$467M Annual R&D Expenditures
Academic Units	15 Colleges and Schools	10 Academy Members	6 Federal R&D Centers	

NEW PEERS

Our combined institution now compares to these leading universities with medical and health-related schools and practices:



1,2



UCI RIVINE

1,2



1,2



1



Stony Brook¹
University

1

1 = AAU Member
2 = Hispanic-Serving Institution

These institutions match UTSA in key metrics including **research, Ph.D. programs, faculty awards, National Academy members, endowment, and annual giving.**

ASPIRANT PEERS

With regards to size, structure, innovation, and integration of the medical school and health-related schools with the academic institution, these are appropriate aspirant peers and models for our integrated institution:

Aspirant Peers

The Aspirant Peers section contains seven university logos arranged in two columns. The left column includes UCLA, University of Michigan, The University of North Carolina at Chapel Hill, and University of Washington. The right column includes UF University of Florida, University of Virginia, and UC San Diego.

Helpful Models

The Helpful Models section contains two university logos. Rutgers University is shown with a red 'R' logo and the text 'RUTGERS' followed by a dashed line and a dot pointing to the text 'Merged with the University of Medicine and Dentistry of New Jersey (UMDNJ) in 2013'. Arizona State University is shown with the 'ASU' logo and the text 'Arizona State University' below it, with a dashed line and a dot pointing to the text 'Hispanic-Serving Institution'.

TO AFFIRM AND LOOK AHEAD

- This is all about creating a world-class university, then growing it
- It is not about budget reductions, cost savings
- We will need all hands to achieve this growth-focused integration
- Continuous focus on excellence

INTEGRATION WEBSITE

Home Integration Updates and News Resources Feedback

UTSA & UT Health San Antonio Integration

Our Path to a World Class University

UTSanAntonioTogether.org

We Will Build the
Foundation of A
World Class
University



Thank you!

